

It all flows to a creek



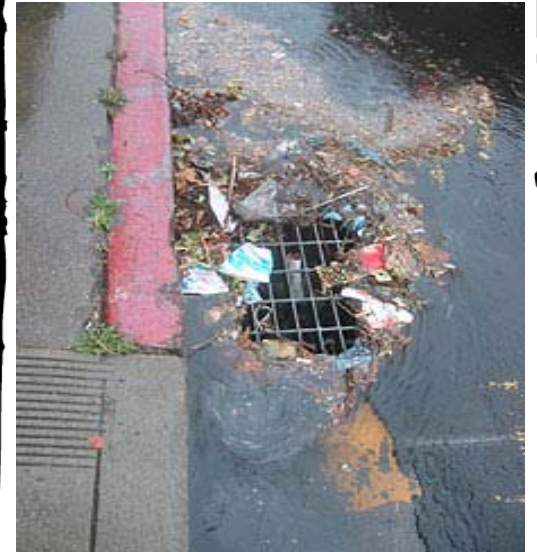
What you need to know about stormwater!

We all need to be
concerned about
stormwater.

Many people think the
water entering the storm
drains after it rains is
treated before it heads
into our creeks and
lakes. Fact is, the water
is not treated and what
we dump in the storm
drain today we could be
swimming or fishing in
tomorrow.

City of Midwest City Stormwater Quality Department

8726 S.E. 15th Street
Midwest City, OK 73110
405.739.1040



**It's a storm drain,
not a trash can!**

*Please don't dump into
our storm drains!*

It's easy to make your house a pollution solution. . .

Home Repair and Improvement

- Sweep up and properly dispose of construction debris such as concrete and mortar.
- Use hazardous substances like paints, solvents, and cleaners in the smallest amounts possible, and follow the directions on the label. Clean up spills immediately, and if you need to dispose of the substances contact the **Household Hazardous Waste Center at 405-739-1049** to set up an appointment. The service is free to Midwest City Residents; just bring up a water bill when you come as proof of residency.
- Purchase and use non toxic, biodegradable, recycled, and recyclable products whenever possible.
- Clean paint brushes in a sink, not outdoors.

Lawn and Garden

- Use pesticides and fertilizers sparingly. When use is necessary, use these chemicals in the recommended amounts. Avoid use if the forecast calls for rain; this could lead to the chemicals washing off and into your local creek.
- Select native plants and grasses that are drought- and pest resistant. Native plants require less water, fertilizer, and pesticides.
- Sweep up yard debris, rather than hosing down areas.
- Compost or recycle yard waste when possible.
- Don't over water your lawn. Water during the cool times of the day, and don't let water run off into the storm drain.
- Cover piles of dirt and mulch being used in landscaping projects to prevent these pollutants from blowing or washing off your yard and into local creeks. Vegetate bare spots in your yard to prevent soil erosion.

Pet Care

- When walking your pet, remember to pick up the waste and dispose of it properly. Flushing pet waste is the best disposal method. Leaving pet waste on the ground increases public health risks by allowing harmful bacteria and nutrients to wash into the storm drain and eventually into local creeks.

Septic System Use and Maintenance

- Have your septic system inspected by a professional at least every 3 years, and have the septic tank pumped as necessary (usually every 3 to 5 years).
- Care for the septic system drainfield by not driving or parking vehicles on it. Plant only grass over and near the drainfield to avoid damage from roots.
- Flush responsibly. Flushing household chemicals like paint, pesticides, oil, and antifreeze can destroy the biological treatment taking place in the system. Other items, such as diapers, paper towels, and cat litter, can clog the septic system and potentially damage components.

Swimming Pool and Spa

- Whenever possible, drain your pool or spa into the sanitary sewer system. At no time is it ok to allow these to drain into the storm drains.
- Properly store pool and spa chemicals to prevent leaks and spills, preferably in a covered area to avoid exposure to stormwater.

Vehicle and Garage

- Use a commercial car wash or wash your car on a lawn or other unpaved surface to minimize the amount of dirty, soapy water flowing into the storm drain and eventually into your local creeks and lakes.
 - Check your car, boat, motorcycle, and other equipment for leaks and spills. Make repairs as soon as possible.
- Clean up spilled fluids with an absorbent material like kitty litter or sand, and don't rinse the spills into a nearby storm drain. Remember to properly dispose of the absorbent material.
- Recycle used oil and other automotive fluids at participating service stations. Don't dump these chemicals down the storm drain or dispose of them in your trash.

The Stormwater Department is here to help you do your part to keep our creeks and lakes clean!

- Call Household Hazardous Waste Center at 405-739-1049 to schedule an appointment to drop off your hazardous wastes. For a complete list of what we take please see <http://midwestcityok.org/household-hazardous-waste-fact-sheet>
- If you see someone dumping into a storm drain we want to know!! Call **405-739-1040**